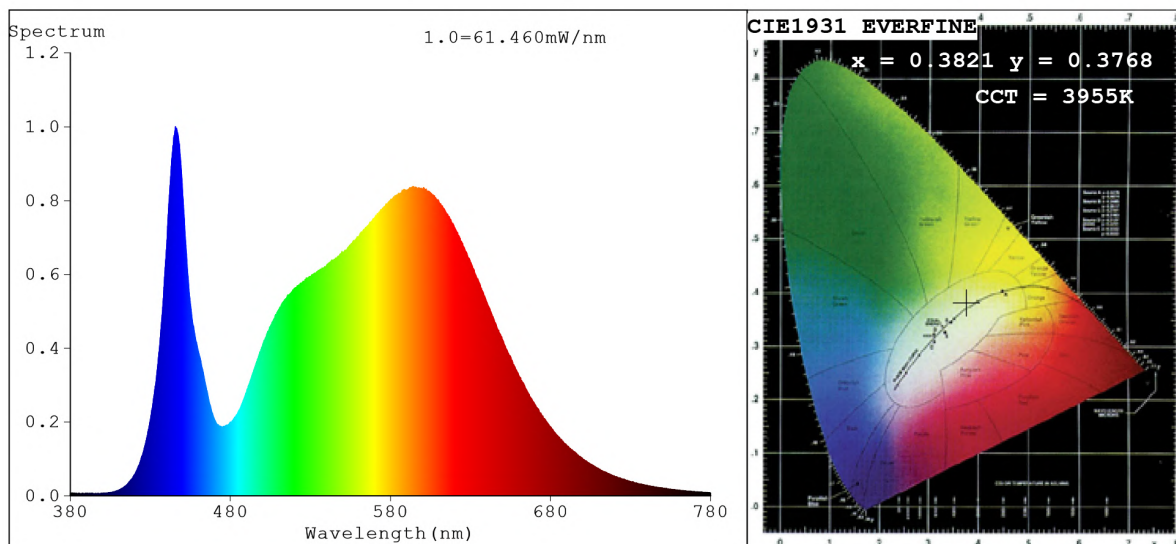


Spectrum Test Report



Color Parameters:

Chromaticity Coordinate: $x=0.3821$ $y=0.3768$ $u'=0.2262$ $v'=0.5018$
 CCT=3955K (Duv=-0.0005) Dominant WL:Ld =579.5nm Purity=27.7%
 Ratio:R=18.5% G=78.2% B=3.3%; Peak WL:Lp=445.7nm FWHM=18.1nm
 Render Index:Ra=82.5 CRI=76.1 TM30:Rf=81 Rg=97
 R1 =81 R2 =87 R3 =93 R4 =83 R5 =82 R6 =83 R7 =86
 R8 =65 R9 =7 R10=71 R11=83 R12=66 R13=82 R14=96 R15=75

Photo Parameters:

Flux = 2940 lm Eff. : 145.64 lm/W Fe = 8.907 W Scotopic:4845.5 S/P:1.6481

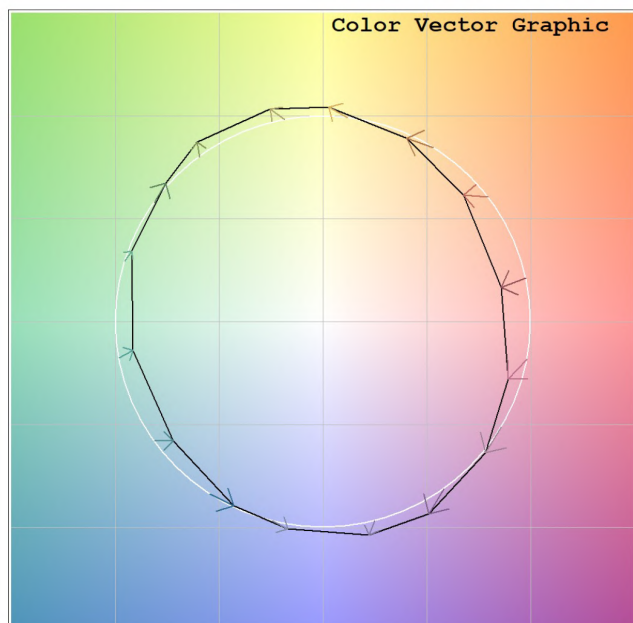
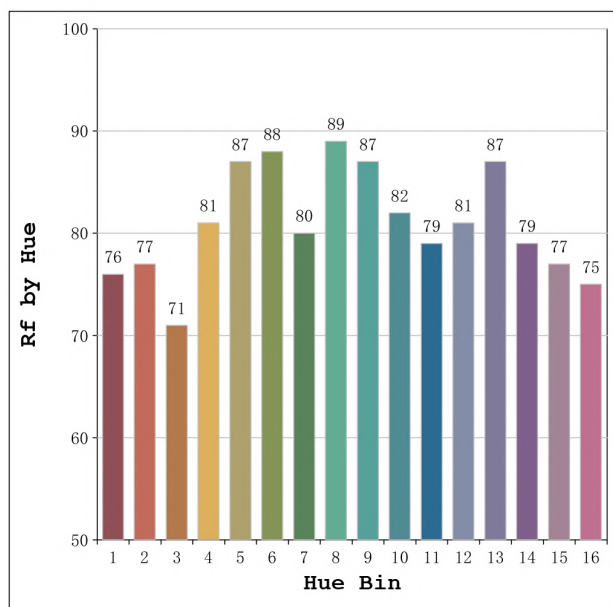
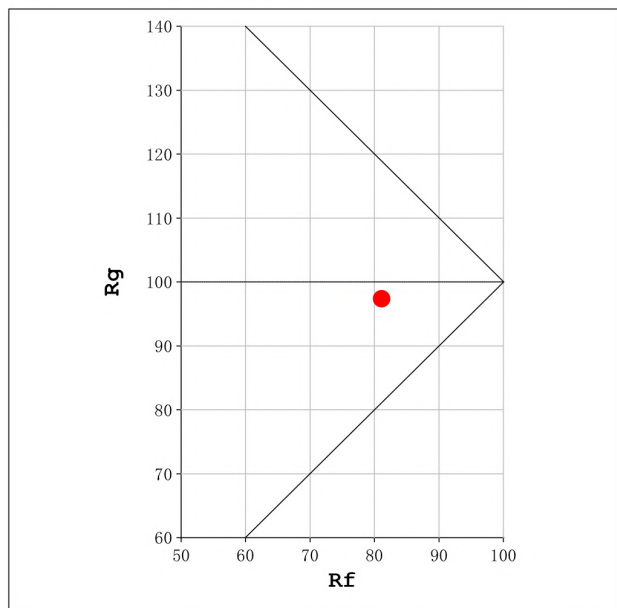
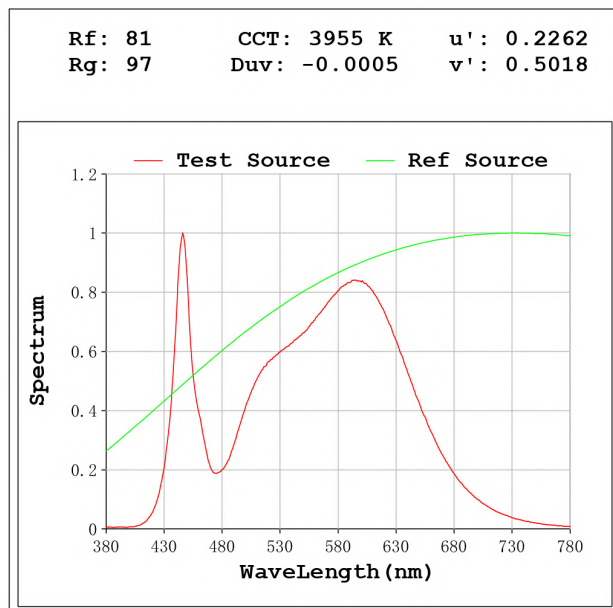
Electrical parameters:

V = 23.998 V I = 0.8412 A P = 20.19 W PF = 1.000

Status: Integral T = 312 ms Ip = 33219 (51%)

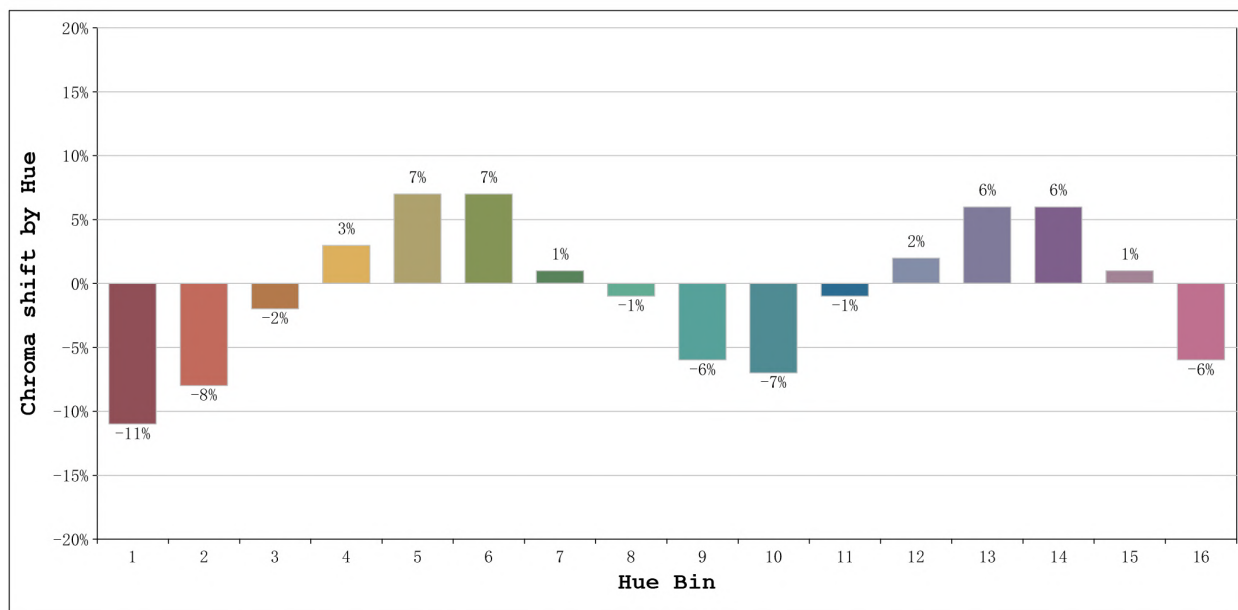
Model:Ecoled Élite 20 4000K
 Tester:Sergio Carneros
 Temperature:25Deg
 Manufacturer:Luz Negra S.L.

Number: 31.018
 Date:2023-09-13 16:34:55
 Humidity:57%
 Remarks:100cm de tira flexible



Model:Ecoled Élite 20 4000K
 Tester:Sergio Carneros
 Temperature:25Deg
 Manufacturer:Luz Negra S.L.

Number: 31.018
 Date:2023-09-13 16:34:55
 Humidity:57%
 Remarks:100cm de tira flexible



			Graphic shift(%)	
Hue Bin	Hue Angle	Rf	Chroma	Hue
1	0.0° - 22.5°	76	-11	-1
2	22.5° - 45.0°	77	-8	7
3	45.0° - 67.5°	71	-2	13
4	67.5° - 90.0°	81	3	10
5	90.0° - 112.5°	87	7	6
6	112.5° - 135.0°	88	7	-2
7	135.0° - 157.5°	80	1	-10
8	157.5° - 180.0°	89	-1	-4
9	180.0° - 202.5°	87	-6	-1
10	202.5° - 225.0°	82	-7	5
11	225.0° - 247.5°	79	-1	13
12	247.5° - 270.0°	81	2	8
13	270.0° - 292.5°	87	6	-3
14	292.5° - 315.0°	79	6	-12
15	315.0° - 337.5°	77	1	-14
16	337.5° - 360.0°	75	-6	-10

Model:Ecoled Élite 20 4000K
 Tester:Sergio Carneros
 Temperature:25Deg
 Manufacturer:Luz Negra S.L.

Number: 31.018
 Date:2023-09-13 16:34:55
 Humidity:57%
 Remarks:100cm de tira flexible